

# APPROVAL SHEET

To :

Customer P/N :

UDE P/N : SSB0-ZZ-0006

Description : SFP+ 2X2 Ass'y

Press-Fit

Contact Area : 15 $\mu$ " Min. Gold

With Lightpipe

Packing With Tray



Spec No.  
SSB021007-00

Update Date  
2021/6/4

Revision  
A

Approved	Checked	Prepared



湧德電子 股份有限公司  
UDE Corp.

桃園市(33852) 蘆竹區內溪路 68 巷13號

No.13, Ln. 68, Neixi Rd., Luzhu Dist., Taoyuan City (33852), Taiwan

TEL: 886-3-3242000 FAX: 886-3-3246611

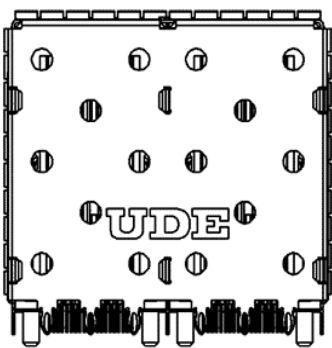
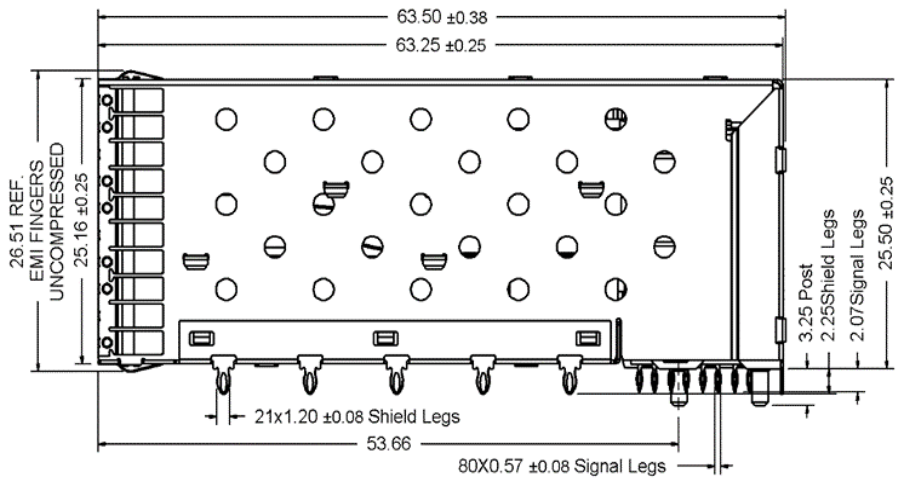
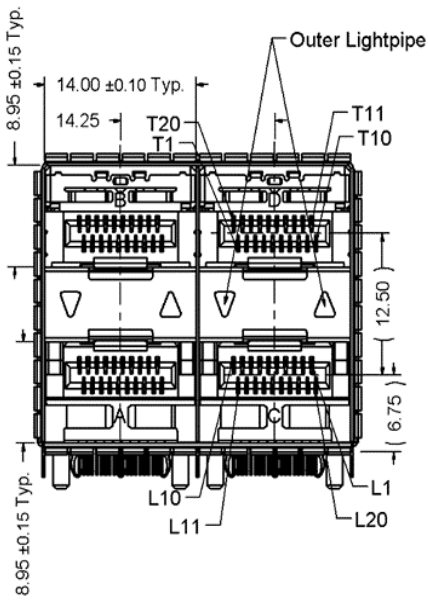
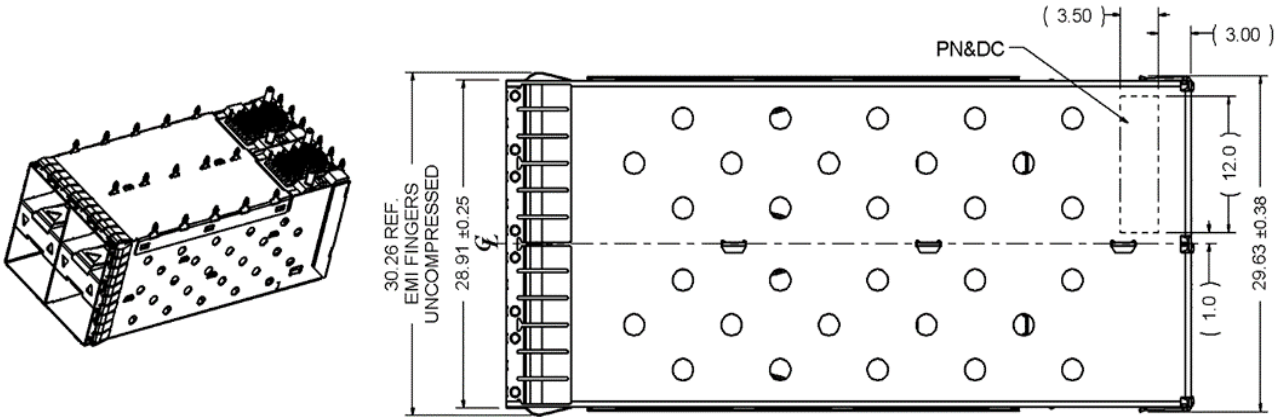
<http://www.ude-corp.com/>



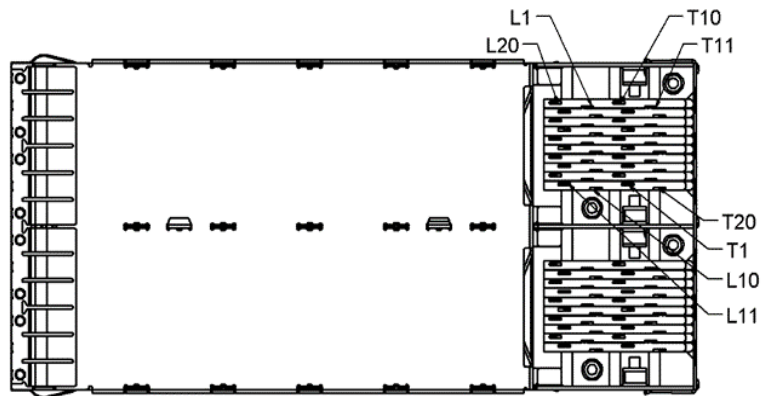
1. MECHANICAL DIMENSION

Product Dimension

Unit:mm	General Tolerance :	X.X : ± 0.38
		X.XX : ± 0.20



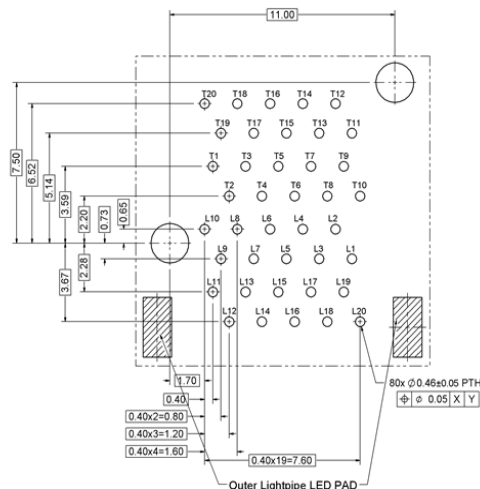
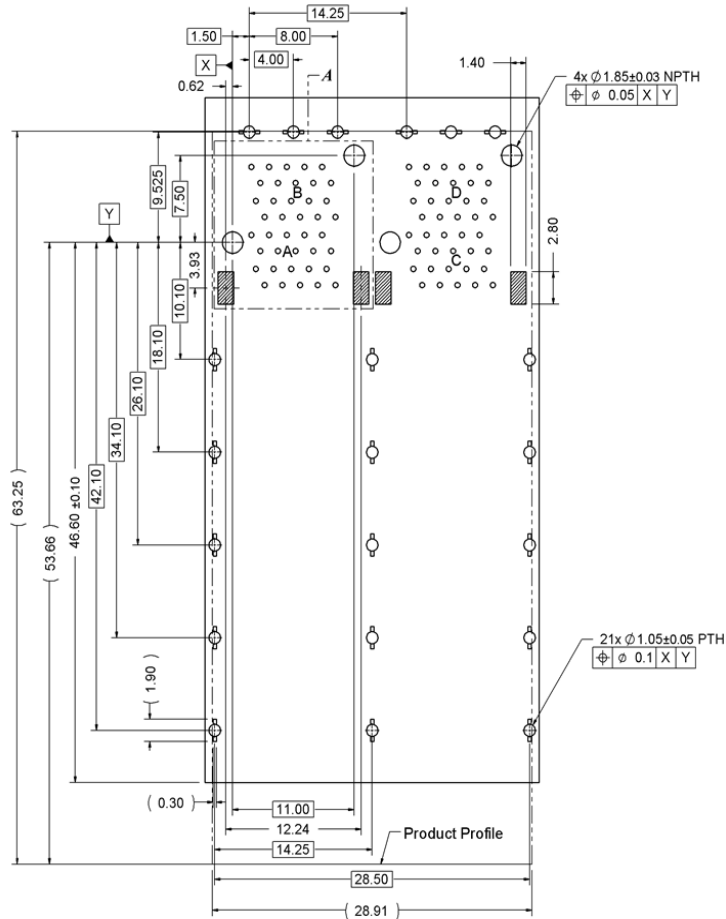
Right View



2. Recommended PCB Layout.Component Side of Board

All dimension units are "mm".

All dimension tolerances are  $\pm 0.05\text{mm}$  unless otherwise specified

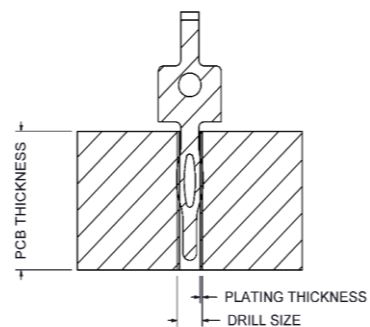


NOTES:

- 1.PADS AND VIAS CONNECT TO CHASSIS GROUND  
RECOMMEND PADS TO BE 2.00mm SQUARE
- 2.RECOMMENDED THRU HOLE PLATING INCLUDES  
HASL,OSP,OR IMMERSION(GOLD,SILVER,OR TIN)
- 3.1.57mm MINIMUM PCB THICKNESS FOR SINGLE SIDED USE.

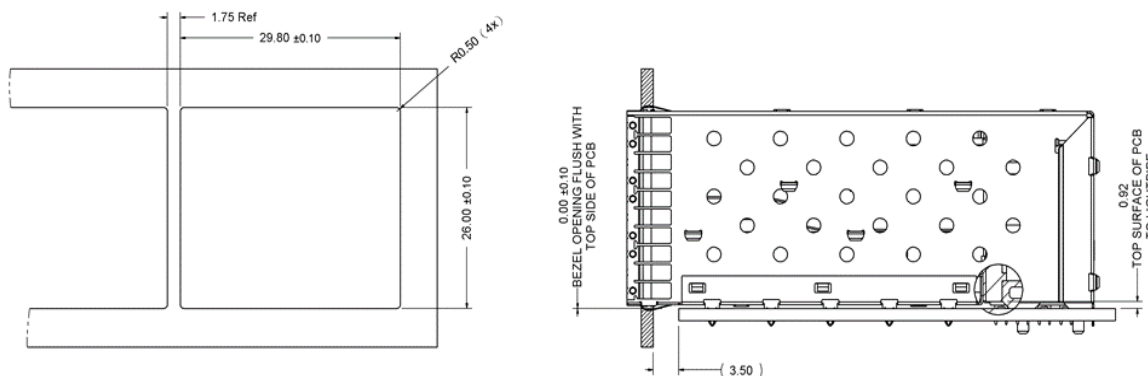
RECOMMENDED MOTHER BOARD THROUGH HOLE DIMENSION

PLATED THROUGH HOLE	1.05 SHIELD PINS	0.46 SIGNAL PINS
FINISHED HOLE DIAMETER	1.05 ±0.05	0.46 ±0.05
DRILLED HOLE DIAMETER	1.15	0.56
COPPER PLATING	0.025 min.	0.025 min.



RECOMMENDED MOTHER BOARD THROUGH HOLE DIMENSION

3. Recommended Panel cutout



PRESS-FIT ASSEMBLIES

Hand place using proper seating force to engage all Leg tails into plated thru-holes.

Assemblies are to be seated per the instructions associated with the appropriate insertion tool

Note:UDE recommends only one connector assembly be installed at a time.

ASSEMBLE INSERTION FORCE		
PORT SIZE	PCB FINISH	FORCE
2X2	Copper w/OSP	730±80N

4. Packing Information

12 pcs finished goods per tray

5 trays(60pcs finished goods) per master carton

## 5. REQUIREMENTS

### Design and Construction

Product shall be of design, construction and physical dimensions specified on applicable.

### Material

Terminal : Copper Alloy, Thickness=0.20mm

Finish : 15 $\mu$ " min Gold Plating on contact area, 50 $\mu$ " min. Nickel overall

Solder Tail : 30 $\mu$ " min Matte Tin, 50 $\mu$ " min Nickel overall

Top Shell : Copper Alloy, Thickness=0.25mm

Bottom Shell : Copper Alloy, Thickness=0.25mm

RL Mid Ground: Copper Alloy, Thickness=0.25mm

UD Mid Ground: Copper Alloy, Thickness=0.25mm

Inner Spring : SUS304, Thickness=0.20mm

EMI Spring Finger : Ph. Bronze, Thickness=0.08mm

Finish : 30 $\mu$ " min. Nickel

Connector Housing: LCP, Black<UL94V-0>

Lightpipe Cover : PBT, Black<UL94V-0>

Light Pipe : PC, Transparent <UL94V-0>

## 6. Operating and Storage Temperature

Operating Temperature : -40°C to +85°C

Storage Temperature : -55°C to +105°C

## 7. SFP specifications

Contact Current Rating: 0.5A (per contact)

Insulation Resistance : 1000MΩ min.

Dielectric Withstanding Voltage : 300VDC @1min.

Insertion force : 40N MAX.

Extraction force : 12.5N MAX.

Durability : 100 cycles MIN.

Cage Retention (Latch strength) : 90N Min.

## 8. Performance and Test Description

Product is designed to meet electrical, mechanical and environmental performance requirements specified in below table. All tests are performed at ambient environmental conditions per MIL-STD-1344A and EIA-364 unless otherwise specified.

## 9. Packaging and Packing

All parts shall be packaged and packed to protect against physical damage, corrosion and deterioration during shipment and storage.