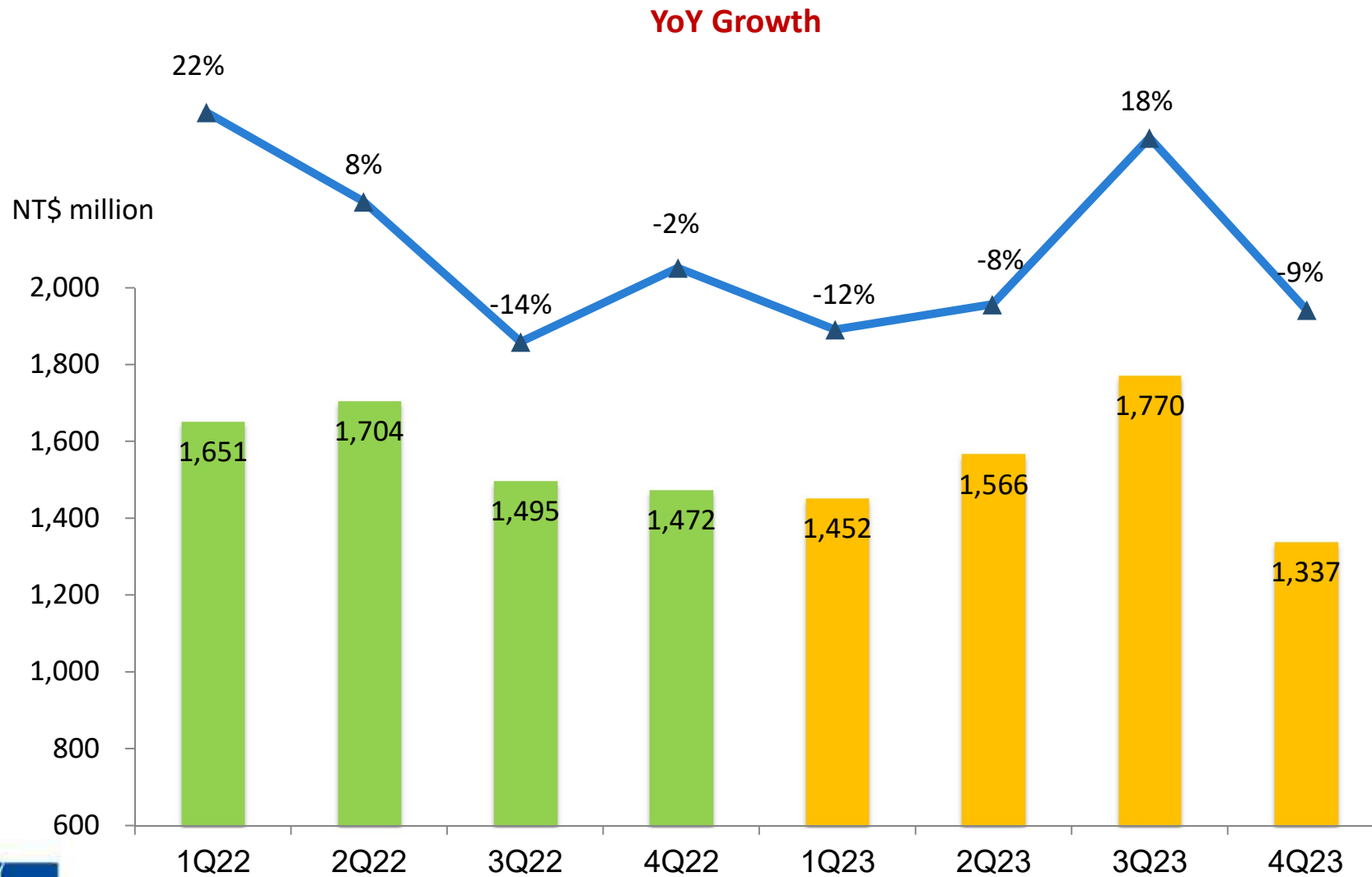


**UDE**

Investor Conference

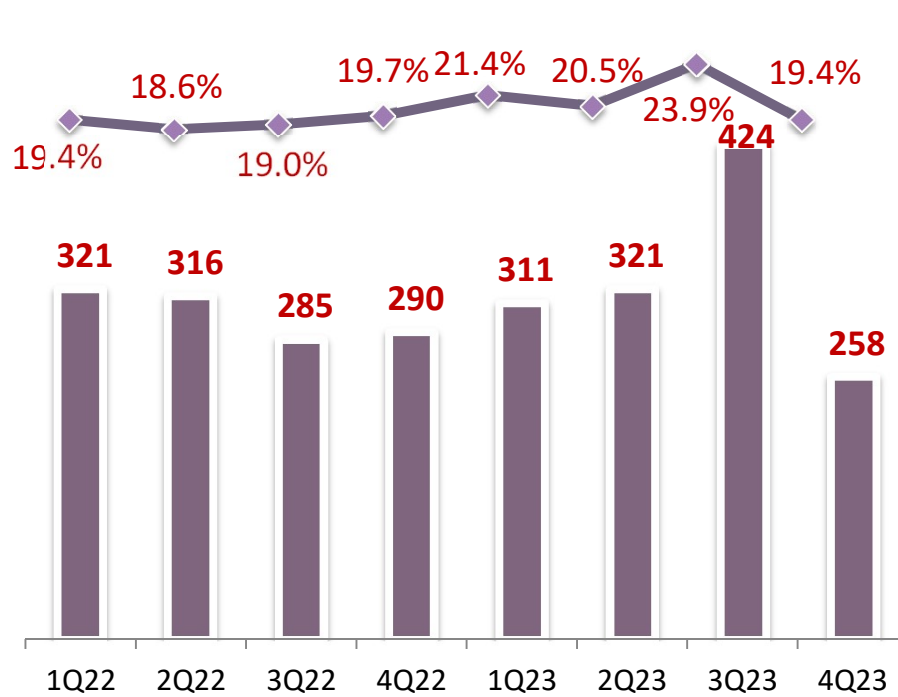
Mar 2024

# Quarterly Revenue Trend

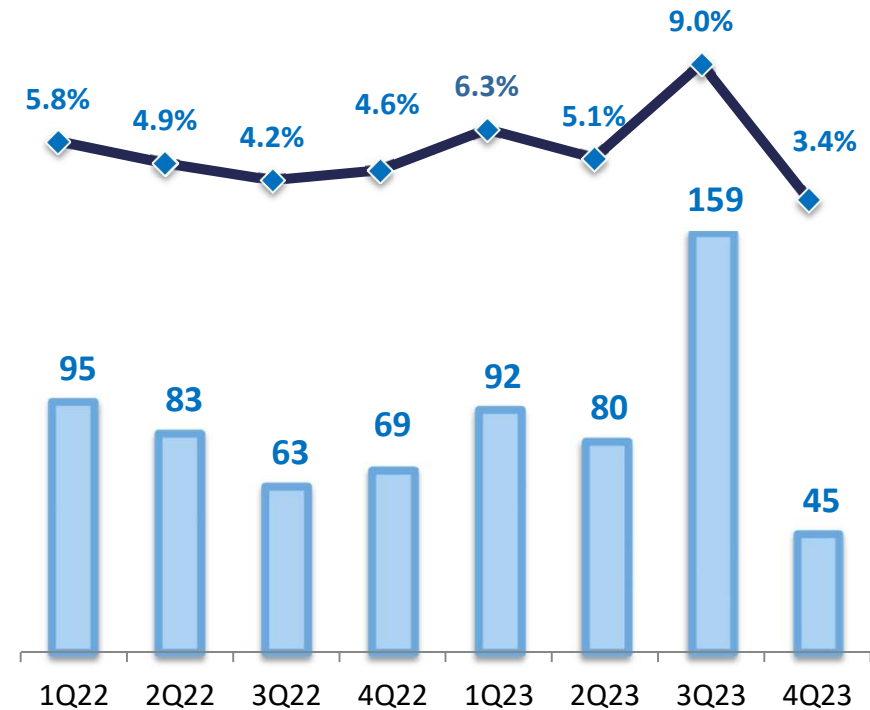


# Gross Profit and Operating Profit

Gross Margin %



Operating Margin %



Gross Profit NT\$ million

Operating Profit NT\$ million



# 2023 Income Statement

| NT\$ million                 | 2023        | 2022        | YoY%        |
|------------------------------|-------------|-------------|-------------|
| Revenue                      | 6,123.8     | 6,321.8     | (3.0)       |
| Gross Profit                 | 1,315.9     | 1,212.0     | 9.0         |
| Operating Expenses           | (938.5)     | (902.4)     | (4.0)       |
| Operating Profit(loss)       | 377.3       | 309.7       | 22.0        |
| Foreign exchange gain/(loss) | 35.7        | 63.6        | (44.0)      |
| Non Operating Income/(Loss)  | 69.1        | 22.6        | 206.0       |
| Income Before Tax            | 482.1       | 395.9       | 22.0        |
| Taxes                        | (97.7)      | (84.8)      | (15.0)      |
| Non-controlling Interests    | (0.3)       | (16.2)      | 98.0        |
| Net Income to Parent         | 384.7       | 327.4       | 18.0        |
| <b>EPS (NT\$)</b>            | <b>4.94</b> | <b>4.25</b> | <b>16.0</b> |

## Key Financial Ratios (%)

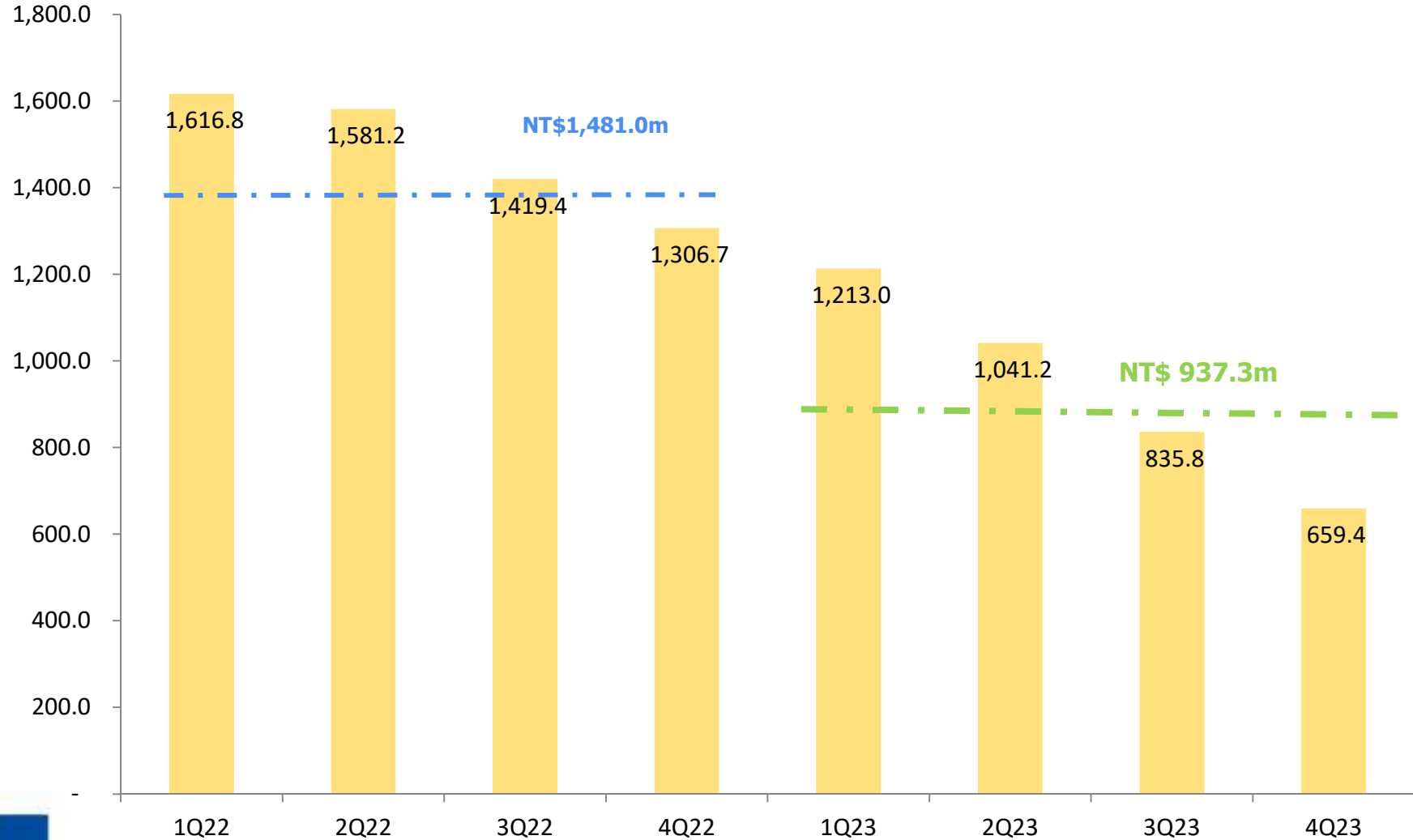
|                         |        |        |
|-------------------------|--------|--------|
| Gross Margin            | 21.5   | 19.2   |
| Operating Expense Ratio | (15.3) | (14.3) |
| Operating Margin(loss)  | 6.2    | 4.9    |
| Net Margin to Parent    | 6.3    | 5.2    |
| Other Information       |        |        |
| Effective Tax Rate (%)  | (20.3) | (21.4) |

# 2023 Balance Sheet

| NT\$ million                    | 2023           | %          | 2022           | %          |
|---------------------------------|----------------|------------|----------------|------------|
| <b>TOTAL ASSETS</b>             | <b>5,178.2</b> | <b>100</b> | <b>5,220.3</b> | <b>100</b> |
| Cash                            | 1,414.2        | 27         | 380.7          | 7          |
| NR & AR                         | 1,563.3        | 30         | 1,763.6        | 34         |
| Inventory                       | 659.4          | 13         | 1,306.7        | 25         |
| Property, plant and equipment   | 1,055.3        | 20         | 1,289.4        | 25         |
| <b>TOTAL LIABILITIES</b>        | <b>1,774.0</b> | <b>34</b>  | <b>2,050.8</b> | <b>39</b>  |
| Bank Loans                      | 676.6          | 13         | 679.9          | 13         |
| NP & AP                         | 388.4          | 8          | 515.2          | 10         |
| Other Payables                  | 486.1          | 9          | 499.1          | 10         |
| Bonds Payable                   | -              | 0          | 45.9           | 1          |
| <b>TOTAL EQUITY TO PARENT</b>   | <b>3,378.9</b> | <b>65</b>  | <b>3,144.4</b> | <b>60</b>  |
| Capital                         | 787.3          | 15         | 772.3          | 15         |
| <b>Key Financial Ratios (%)</b> |                |            |                |            |
| Current Ratio                   | 130            |            | 132            |            |
| Debt Ratio                      | 34.3           |            | 39.3           |            |
| Book Value (NT\$/share)         | 42.9           |            | 40.7           |            |

# Inventory

NT\$ million

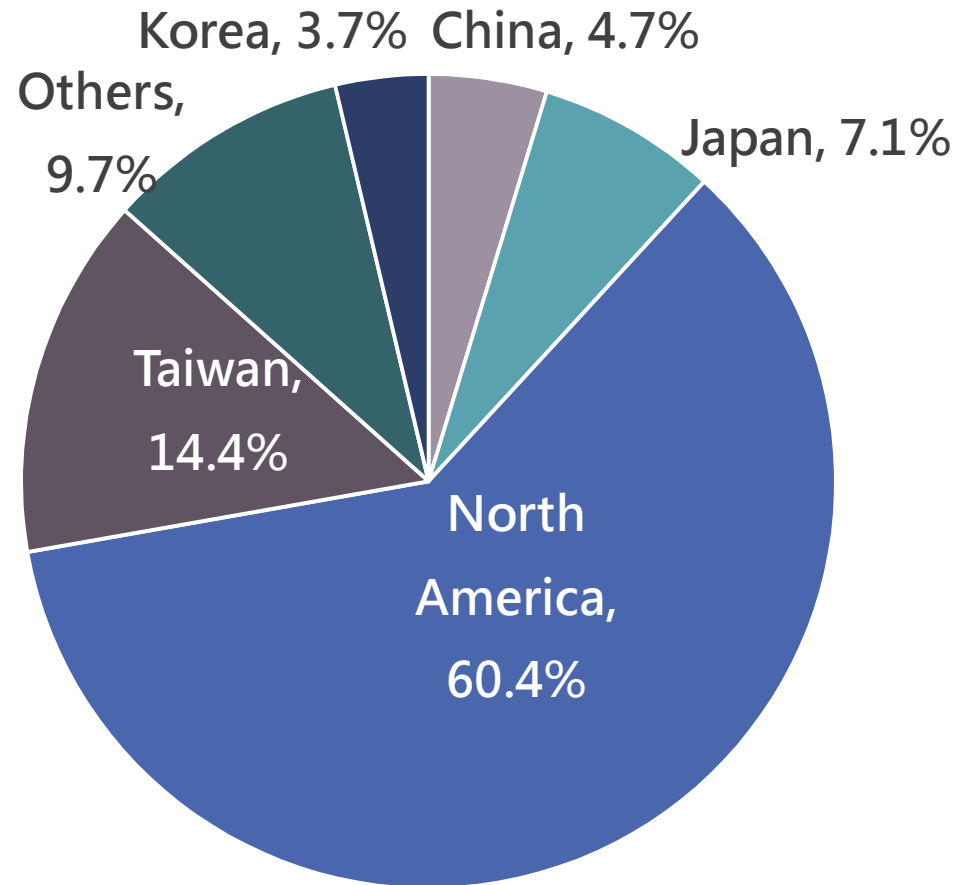




# Product Information

# Sales Revenue –By Area

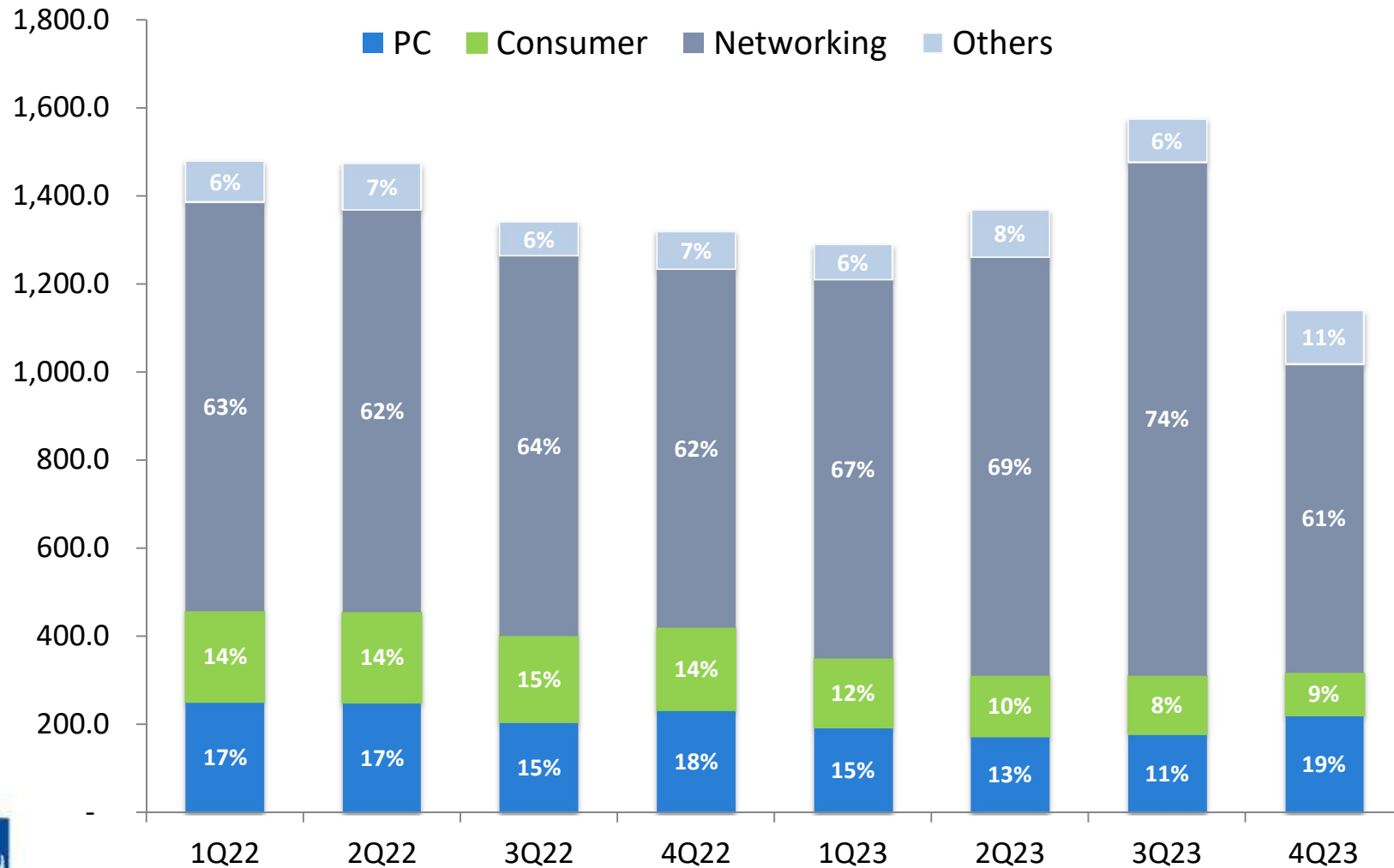
---



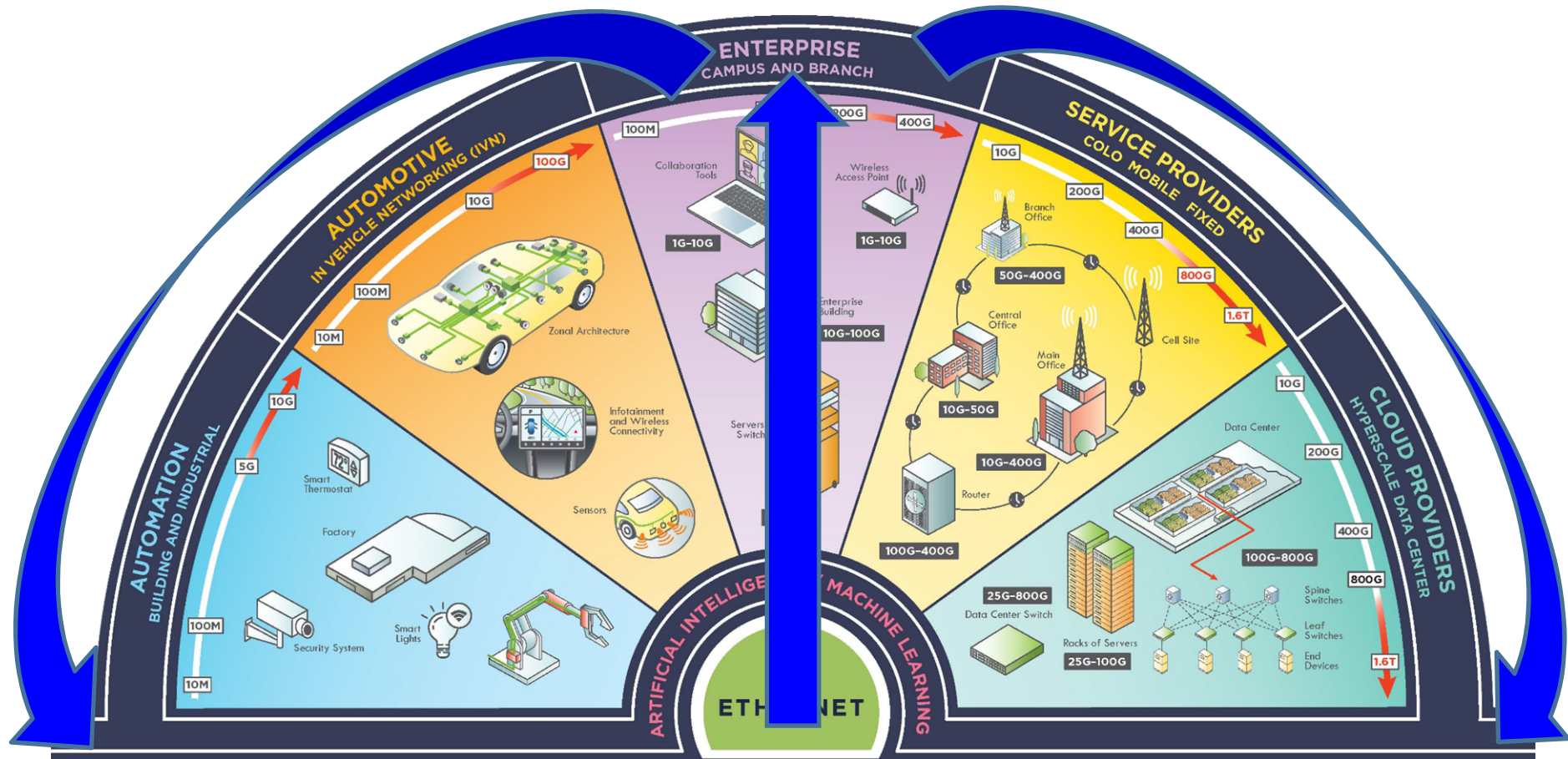


# Sales Revenue –By Applications

NT\$ million



# Product Roadmap



From Ethernet Alliance

# RJ45

## ✓ **RJ ICM series**

- Single-port & Multi-ports
- Speed : 10/100M Base-T/1G Base-T/  
2.5G Base-T/5G Base-T/10G Base-T/25G Base-T
- PoE Function / Surge Protection / Relay

## ✓ **Pure RJ series**

- Single-port & Multi-ports



# Magnetics

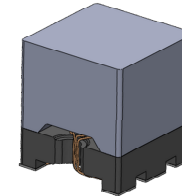
## ✓ LAN Filter

- Single/ Dual/ Quad port
- Speed : 10-100M Base-T/ 1G Base-T/ 2.5G Base-T/ 5G Base-T/ 10G Base-T
- Compliant with IEEE 802.3 Standard : PoE/ PoE+/ PoE++ Function



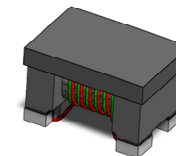
## ✓ Chip LAN Transformer

- Size(mm) : 30x30/ 36x36
- Speed : 10-100M Base-T/ 1G Base-T/ 2.5G Base-T/ 5G Base-T/ 10G Base-T
- PoE : 15W/ 30W/ 60W/ 100W



## ✓ Common Mode Filter

- Size(mm) : 20x12/ 32x25/ 45x32



# SFP/QSFP

## ✓ SFP series

- Speed : 1G Base-T/ 10G Base-T/ 25G Base-T/ 50G Base-T
- SFP
- SFP+
- SFP28

## ✓ QSFP series

- Speed : 40G Base-T/ 100G Base-T/ 200G Base-T
- QSFP+
- QSFP28
- QSFP112

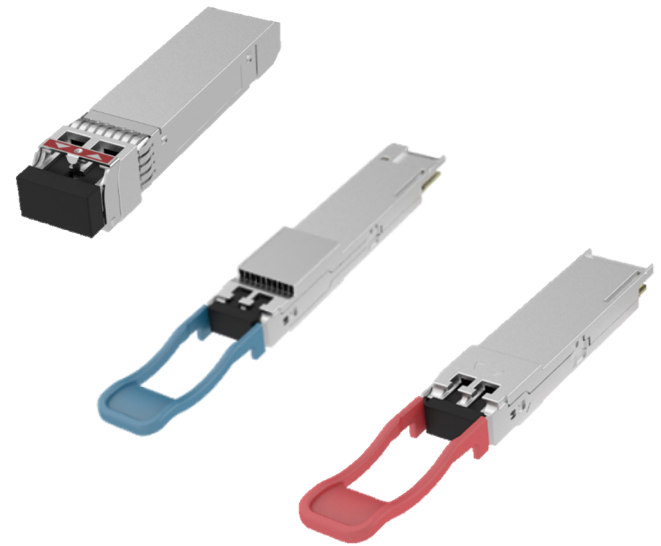
## ✓ QSFP-DD series

- Speed : 400G Base-T/ 800G Base-T
- QSFP-DD
- QSFP-DD800



# High Speed Cable

- SFP10G/ 25G/ 50G DAC Cable
- QSFP40G/ 100G/ 200G/ 400G
- QSFP400G/ OSFP400G
- Transceiver 10G/ 25G/ 100G SR&LR&ER
- Transceiver 400G SR8
- SFP&QSFP 10G/ 25G/ 100G AOC Cable



# Immersion Cooling

- ✓ Immersion Cooling
  - High-Density
  - Module Design
  - High Efficient Heat Dissipation
  - High Frequency Signal Transmission
  - Waterproof IP67



# Vietnam Factory



- ✓ Location: Thai Ha Industrial Park, Lý Nhân City ,Ha Nam Province
- ✓ Area: 50,801m<sup>2</sup>
- ✓ Estimated number of employees: 2500
- ✓ 2024 : ISO Certification & Customer Audits
- ✓ 2025 : Mass Production